

WWW.CHASSISPARTS.COM

chassis  **parts**
 .com

YOUR CHROMOLY TUBES AND ACCESSORIES SUPPLIER

- 25CRM04 ENDURO TUBES - ROD ENDS - TUBE BENDERS - GUSSETS -
- HIGH STRENGTH STEEL SHEETS - SAFETY - RADIUS TOOLS - CLECOS - BEADING TOOLS -
- QUICK RELEASE FASTENERS - WELDING BRACKETS - TOOLS - ACCESSORIES -



PREFERRED DEALER OF:



ENDUROTUBE

Cleco
Innovation In
Assembly Productivity

FASTENERS

 **Link**
bearings

ROD ENDS

STRENX
PERFORMANCE STEEL
DOCOL
HIGH STRENGTH STEEL

STEEL SHEETS

CATALOGUE 2016 - 2017 / 2

MEMBER OF THE  **GROUP**



chassis  parts
.com

Index

Chapter

1	Enduro Tubes
2	Benders
3	Link Bearings
4	Lockfast
5	Radius tools
6	Aluminum
7	Strenx/Docol
8	Cleco

Chapter

9	Welding brackets
10	Rollcage accessories
11	Safety
12	Plastics & Rubbers
13	Welding
14	Accessories
15	Tools

Contact

We ship worldwide. For inquiries please contact us.

Webshop: WWW.CHASSISPARTS.COM

The Netherlands

Telephone: +31 (0) 224 54 44 44
E-mail: info@chassisparts.com

France

Telephone: +33 (0) 363 47 90 3
E-mail: info@outilworld.fr

Showroom and warehouse:
Winkelerzand 3
1731LR Winkel
The Netherlands

ENDURO
TUBE

Endurotube

Chrome Molybdenum tubes. 25Crmo4/25cd4s. Delivery condition: +SR.

Seamless cold drawn precision steel tubes, oiled and free of burrs. Equivalent to 4130 hardened tube. Marking on tubes: Dimensions (mm), Endurotube and Certificate

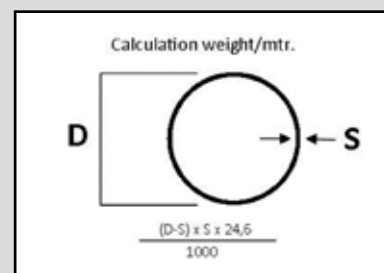
number. Produced according
UNI6403/DIN 2391

Yield strength (ReH): minimum 700/mm²

Tensile strength (Rm): between 800-
1000 N/mm²

Elongation (A5): minimum 15%

Art. code	Size mm.	Weight p/mtr.	Tube length	Price p/mtr
39133050	10x0,8	0,18 kg/mtr	6 mtr	€ 3,50
39133003	12x1,5	0,38 kg/mtr	6 mtr	€ 3,95
39133004	15x1,5	0,40 kg/mtr	6 mtr	€ 4,75
39133005	18x1,0	0,42 kg/mtr	6 mtr	€ 4,50
39133006	18x1,5	0,61 kg/mtr	6 mtr	€ 5,75
39133010	20x1,5	0,70 kg/mtr	6 mtr	€ 6,80
39133012	22x1,5	0,76 kg/mtr	6 mtr	€ 5,95
39133013	22x2,0	0,99 kg/mtr	6 mtr	€ 6,25
39133025	25x1,5	0,88 kg/mtr	6 mtr	€ 6,95
39133026	25x2,0	1,13 kg/mtr	6 mtr	€ 7,95
39133027	28x1,5	0,98 kg/mtr	6 mtr	€ 7,95
39133028	28x2,0	1,28 kg/mtr	6 mtr	€ 8,25
39133015	30x1,5	1,05 kg/mtr	6 mtr	€ 7,75
39133020	30x2,0	1,40 kg/mtr	6 mtr	€ 9,50
39133030	32x2,0	1,50 kg/mtr	6 mtr	€ 9,95
39133033	35x1,5	1,24 kg/mtr	6 mtr	€ 10,25
39133035	35x2,0	1,63 kg/mtr	6 mtr	€ 12,50
39133037	35x2,5	2,00 kg/mtr	6 mtr	€ 13,95
39133036	35x3,0	2,37 kg/mtr	6 mtr	€ 15,75
39133038	38x2,5	2,10 kg/mtr	6 mtr	€ 16,95
39133039	40x1,5	1,42 kg/mtr	6 mtr	€ 13,25
39133040	40x2,0	1,90 kg/mtr	6 mtr	€ 12,95
39133043	45x2,5	2,62 kg/mtr	7 mtr	€ 15,95
39133044	48x2,5	2,80 kg/mtr	7 mtr	€ 16,50
39133046	50x2,0	2,37 kg/mtr	7 mtr	€ 15,75
39133069	70x2,5	4,16 kg/mtr	7 mtr	€ 24,95



For certain applications you may require the certificate **EN 10204-3.1**. On request we will provide you this certificate together with the tubes.



GT Benders



Benders

Chassisparts offers 3 models of tube benders:

Model Standard, Xtra and Xtreme.

The steel die sets eliminate the problems that occur with aluminum die sets from other manufacturers such as breakage and groove spreading when bending 25CrMo4 (4130) chrome molybdenum tubes.



	Model Standard	Model Xtra	Model Xtreme
Description	Affordable bender of top quality which is specially designed for do-it-yourself race car builders and small fabrication shops.	The Heavy Duty and improved version of the model Standard. Specially designed for professionals and race car builders.	With digital display especially for manufacturers. This bender is very easy to operate and can be fully adjusted for bending semi-automatic.
Manual / Hydraulic	Manual / Hydraulic	Manual / Hydraulic	Hydraulic
Anti-Springback	No	Yes	Built-in mechanism
Min. outer diameter	12,7 mm round/square	12,7 mm round/square	12,7 mm round/square
Max. outer diameter	50 mm round 38 mm square	60 mm round 50 mm square	60 mm round 50 mm square
Min. wall thickness	1,5 mm (up to 38 mm round) 2,0 mm (40 & 45 mm round) 3,0 mm (48 & 50 mm round) 2,0 mm (square)	1,5 mm (up to 35 mm round) 2,0 mm (38 <> 45mm round) 3,0 mm (48 <> 60mm round) 2,0/2,5 mm (square)	1,5 mm (up to 35 mm round) 2,0 mm (38 <> 45mm round) 3,0 mm (48 <> 60mm round) 2,0/2,5 mm (square)
Max. wall thickness	solid (up to 25 mm round) 3,0 mm (28 <> 50 mm round) 3,0 mm (square)	Solid (up to 38 mm round) 6,0 mm (40 <> 48 mm round) 3,0 mm (50 <> 60mm round) 4,77 mm (square)	Solid (up to 38 mm round) 6,0 mm (40 <> 48 mm round) 3,0 mm (50 <> 60mm round) 4,77 mm (square)
Minimum distance between bends	110 mm	110 mm	110 mm
Bends solid tubing	Up to 25 mm OD	Up to 38 mm OD	Up to 38 mm OD



**Bender
Standard**

€ 355,00

Art. code: 14702100

Model GT Bender Standard Manual

A very affordable bender of top quality which is designed for do-it-yourself race car builders and small race car factories. The model Standard manual can later be extended to an hydraulic version. Simply buy the hydraulic unit and cylinder kit.

Note: Delivery without die sets and floorstand.



Degree pointer

Die Sets GT-Bender Standard

Die sets can be changed within 30 seconds. Bending times are between 30 - 60 seconds.

Contains: die set 180°, followbar, bolt, u-strap and degree pointer.

Art. code	OD Ø mm	Radius mm	Min. WT mm	Max. WT mm	Price
Die sets 180 degrees Round Tubing					
14702140	20	76	1,5	solid	€17500
14702142	22	89	1,5	solid	€215.00
14702145	25	89	1,5	solid	€215.00
14702148	28	114	1,5	3,0	€295.00
14702150	30	114	1,5	3,0	€295.00
14702151	32	140	1,5	3,0	€325.00
14702152	35	140	1,5	3,0	€335.00
14702154	38	165	1,5	3,0	€350.00
14702155	40	165	2,0	3,0	€365.00
14702160	45	165	2.5	3,0	€379.00
14702162	50	165	3,0	3,0	€419.00
Die sets 180 Square Tubing					
14702210	20x20	76	2,0	3,0	€195.00
14702215	25x25	89	2,4	3,0	€239.00
14702220	30x30	114	2,4	3,0	€369.00
14702230	40x40	140	2,4	3,0	€389.00



€ 159,00

Floorstand Standard

For stable mounting of the GT Bender Standard with ideal working height.

Art. code: 14702110



€ 579,00

Hydraulic kit for GT-bender Standard Manual

Consisting of adapter and hydraulic cylinder. Very easy to assemble and to build a manual bender into a hydraulic version. (in combination with the hydraulic power pack).

Art. code: 14702133



€ 525,00

Hydraulic Power Pack + Accessories

(relais, push button box, electric solenoid, HP hose and electrical box)

Art. code: 14702191



1



Bender Xtra

3

4

5



€ 475,00

Art. code: 14703000

6

Model GT Bender Xtra Manual

This model Xtra is the Heavy Duty and improved version of the model Standard. The mounted die locking mechanism was specially developed to bend thin walled tubes like 40x1,5 and 50x2,0 mm by preventing the tube from relaxing when not bending. Springback is the number 1 cause of wrinkling thin walled tubing. This machine also has a larger capacity (diameter & wall thickness) than the model Standard. This model is available in two versions; manual or hydraulic. Just like the model Standard you also can extend the Xtra manual version later into a hydraulic version. Note: Delivery without die sets and floorstand.

7

8

9



€ 959,00

GT-Bender Xtra Hydraulic

Including: hydraulic cylinder and adapter. Without floor stand, die sets and power pack.

Art. code: 14703100

10

11

12

13



€ 159,00

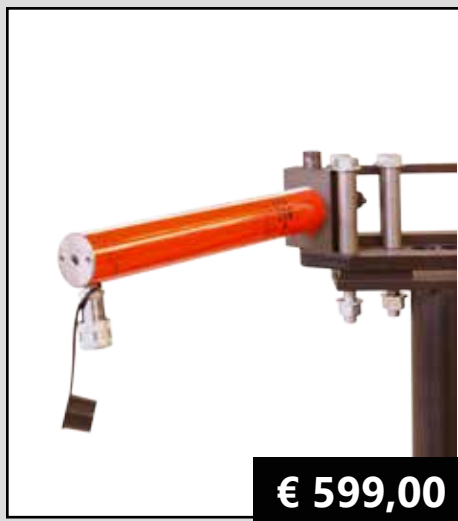
Floorstand Xtra

For stable mounting of the GT Bender Xtra with ideal working height.

Art. code: 14703110

14

15



€ 599,00

Hydraulic kit for GT-bender Xtra Manual

Consisting of adapter and hydraulic cylinder. Very easy to assemble and to build a manual bender into a hydraulic version. (in combination with the hydraulic power pack).

Art. code: 14703135



€ 525,00

Hydraulic Power Pack + Accessories

(relais, push button box, electric solenoid, HP hose and electrical box)

Art. code: 14702191

Bender Xtra



Degree pointer



Anti spring-back mechanism

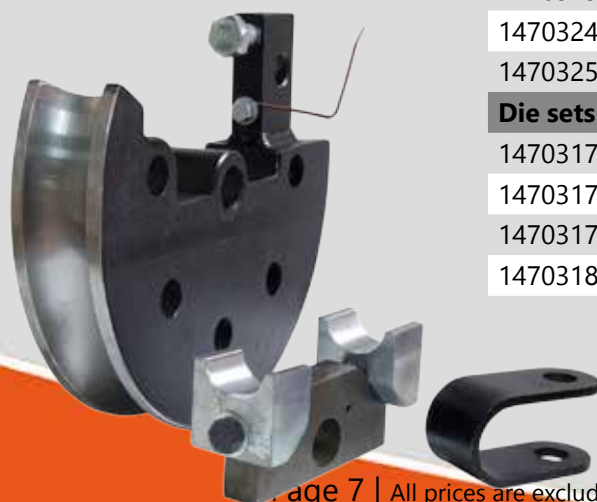
- Bends round tubes up to 60 mm and square tubes up to 50 mm.
- Round tubes with a diameter of 50 mm or more, the minimum wall thickness must be 3 mm or more.
- With Anti-Springback mechanism.
- Extra heavy duty.
- Further developed and improved version of the model Standard.
- The hydraulic swivel block rotates on the cylinder axis and thereby preventing side load on the ram during bending. This greatly extends the lifetime of the cylinder. A one piece steel ram yoke with quick disconnect pin is now incorporated as well.
- 100% CNC machined.

Die Sets GT-Bender Xtra

Die sets can be changed within 30 seconds. Bending times are between 30 - 60 seconds.

Including: die set, followbar, bolt, u-strap and degree pointer.

Art. code	OD Ø mm	Radius mm	Min. WT mm	Max. WT mm	Price
Die sets 180 degrees Round Tubing					
14703140	20	76	1,5	Solid	€ 175,00
14703142	22	89	1,5	Solid	€ 210,00
14703145	25	89	1,5	Solid	€ 210,00
14703148	28	114	1,5	Solid	€ 299,00
14703150	30	114	1,5	Solid	€ 299,00
14703152	32	140	1,5	Solid	€ 325,00
14703155	35	140	1,5	Solid	€ 339,00
14703158	38	140	2,0	6,0	€ 339,00
14703160	40	165	2,0	6,0	€ 365,00
14703165	45	165	2,5	6,0	€ 379,00
14703168	48	165	2,5	6,0	€ 419,00
14703170	50	165	3,0	6,0	€ 419,00
Die sets 180 degrees Pipe Tubing Imperial					
14703210	21,34 1/2"	90	2,77	2,77	€ 199,00
14703220	26,67 3/4"	114	2,87	2,87	€ 289,00
14703230	33,40 1"	140	3,38	3,38	€ 325,00
14703240	42,16 1.1/4"	165	3,56	3,56	€ 369,00
14703250	48,26 1.1/2"	165	3,68	3,68	€ 419,00
Die sets Square Tubing					
14703175	20x20	76	1,7	4,75	€ 189,00
14703177	25x25	89	2,1	4,75	€ 239,00
14703179	30x30	114	2,1	4,75	€ 345,00
14703181	40x40	165	2,5	4,75	€ 389,00



1

Model GT Bender Xtreme



Bender X-treme

This bending machine is designed for companies with repeating commands. In combination with the indexer you are able to reproduce bends without thinning. This machine makes it possible to get perfect bends even with less qualified staff.



€ 4.450,00

Art. code: 14704001



- Bends up to 65 mm in diameter (For minimum and maximum wall thicknesses, see the specifications of the die sets!)
- Uses new type of die sets. *DIE SETS NOT INCLUDED*
- 1 cylinder stroke bends up to 90 degrees in approximately 18 seconds.
- 2 cylinder strokes bends up to 180 degrees.
- The indexing wheel and engraved twin rails allow you to determine the bend position once for a die set and use that setting for the life of the bender.
- Bender is including built-in 1.5 H.P. - 200 bar Electronic / Hydraulic pump, Cylinder, Stand and Target Set Feature.
- Target Set Feature (Included with purchase) –You are able to set the degrees desired on the digital readout and the hydraulic unit will automatically stop the bend within 2/10 of a degree.
- Rotary Indexer Accessory (optional) – This can be added to this bender. Adds simplicity and accuracy to your bending.
- The Model Xtreme is great for the racing industry, boating, hand rails, and most fabrications.

Indexer for GT-bender Xtreme

The Rotary Indexer adds simplicity and accuracy to your bending.

Indexer includes a 5" chuck to allow you to clamp the end of the tubing. The indexer is 3,5 meters long with a measuring device over the entire length and gives you the extra support you need when bending frequently. The clamp is mounted on a turntable with 180 degrees angular spacing. Supplied with 3 movable stops, you can indicate exactly where the bend has to come. When you move the fixed tube towards the bender it will automatically click in the stop. So without marking, protractor and tape measure you can bend the tube exactly the way you want it. For the applications that involve bending on both ends of the tubing we offer the purchase of clamps (not

in stock) to match the OD of your tubing. This will allow you to clamp the center of the tubing and work from both ends.

Art. code: 14704005



€ 1.775,00

Die Sets GT-Bender Xtra Contains: die set, followbar, bolt, u-strap and degree pointer.

Art. code	OD Ø mm	Radius mm	Min. WT mm	Max. WT mm	Price
14704070	30	114	1,5	Solid	€ 335,00
14704080	35	140	1,7	Solid	€ 375,00
14704090	40	165	2,0	6,35	€ 395,00
14704095	45	165	2,5	6,35	€ 415,00
14704098	50	165	2,5	6,35	€ 449,00



3

4

5

6

7

8

9

10

11

12

13

14

15

Bender accessories



Cover for GT Benders

Cover specially made for the Hydraulic benders GT Standard and GT Xtra. Can also be used for the manual benders. Ideal against moisture and dirt
Art. code: 14702135

€ 59,00



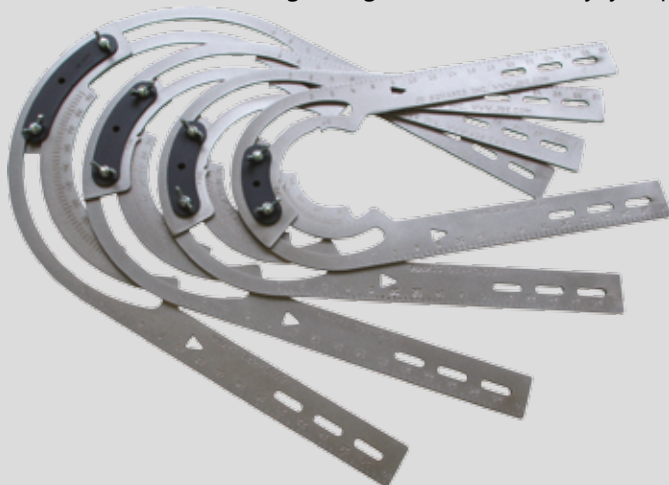
Hydraulic oil HM 46 (5L.)

Only use this oil for the hydraulic power pack! It reduces wear to a minimum and ensures an extra long life of the pump.
Art. code: 14200491

€ 9,95

Protractor radius tool

The bendicator protractor will let you work more efficient, in a far more simple way. The bend of your tube can be calculated without even touching a single tube. In this way, you prevent yourself from wasting large amount of tubes by miscalculation. The protractor must match with the radius of the die set you use.



Art. code	Radius mm	Price
14702360	92	€ 75,00
14702365	116	€ 75,00
14702370	140	€ 89,00
14702375	167	€ 89,00

Digital thickness gauge

Compact, simple to use and durable ultrasonic thickness gauge with LCD digital display is the most accurate way to measure the wall thickness of materials such as steel, cast iron, plastic and more. The gauge provides basic measurement, scanning, adjustable sound velocity and extended storage capabilities for additional flexibility. Including aluminum casing and 1 tube of gel.
Art. code: 12701190



€ 99,00



Ultrasound Gel for thickness Gauge

Tube of 60 g single use aquasonic ultrasound gel for use in combination with the thickness gauge.

Art. code: 14224070

€ 4,70



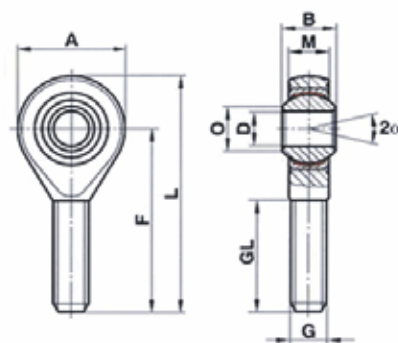
€ 54,00

Digital angle meter

This tool can be placed on the tube using the clamp tool. This ensures that when you bend a chrome moly tube, the tube will be in the right angle during bending. The angle meter has an automatic shutdown. Readout switchable in degrees and percentages. The bottom of the protractor is magnetic and can also be released from the clamping tool.
Art. code: 14705100

Link Bearings Rod Ends

Most sold rod end in autosport. Has proven itself in heavy duty circumstances like autocross and rally. Exclusively made according to our specifications. Best quality for the lowest price.



Link Bearings Rod Ends heavy duty outer thread

The ultimate in performance.

These heavy duty rod ends

are commonly used for wheel suspension because of their strength and durability. These rod ends are completely self-sealing and self-lubricating because of their Teflon/Kevlar injection molded lining that keeps dirt and debris out.

BALL

- 52100 Bearing Steel
- Heat Treated Hrc 58-64
- Hard Chrome Plated
- Precision cut

LINER

- PTFE
- Kevlar
- Self-Lubricating
- Self-Sealing

BODY

- Chromoly Steel
- Heat Treated
- Protective Coated for Corrosion Resistance

Art. code	G	D	B	M	A	F	L	O	GL	Static load kN	Price 1-9	Price 10-24	Price 25 <
Right Thread													
10640105	M6	6	9.0	7.0	20	37	46	10.0	22.0	11.2	€ 5,88	€ 4,12	€ 3,53
10640110	M8	8	12.8	9.0	24	42	54	10.4	25.0	19.5	€ 7,20	€ 5,04	€ 4,31
10640115	M10	10	13.8	10.4	28	48	62	13.2	29.0	31.7	€ 9,15	€ 6,40	€ 5,49
10640120	M12	12	15.8	11.9	32	54	70	15.7	33.0	48.8	€ 10,90	€ 7,63	€ 6,54
10640125	M12x1.25	12	15.8	11.9	32	54	70	15.7	33.0	48.8	€ 10,90	€ 7,63	€ 6,54
10640130	M12x1.50	12	15.8	11.9	32	54	70	15.7	33.0	48.8	€ 10,90	€ 7,63	€ 6,54
10640135	M14	14	18.8	13.2	36	60	78	16.6	36.0	65.8	€ 12,20	€ 8,55	€ 7,32
10640140	M14x1.50	14	18.8	13.2	36	60	78	16.6	36.0	65.8	€ 12,20	€ 8,55	€ 7,32
10640145	M16	16	20.8	14.9	42	66	87	20.0	37.0	80.0	€ 13,51	€ 9,45	€ 8,10
10640150	M16x1.50	16	20.8	14.9	42	66	87	20.0	37.0	80.0	€ 13,51	€ 9,45	€ 8,10
10640155	M18x1.50	18	22.8	16.4	46	72	95	22.4	42.5	95.0	€ 16,34	€ 11,44	€ 9,81
10640160	M20x1.50	20	24.8	17.8	50	78	103	24.6	47.0	107	€ 22,67	€ 15,87	€ 13,60
10640165	M22x1.50	22	28.0	20.0	54	84	115	26.0	48.0	143	€ 29,41	€ 20,52	€ 17,65
Left Thread													
10640205	M6	6	9.0	7.0	20	37	46	10.0	22.0	11.2	€ 5,88	€ 4,12	€ 3,53
10640210	M8	8	12.8	9.0	24	42	54	10.4	25.0	19.5	€ 7,20	€ 5,04	€ 4,31
10640215	M10	10	13.8	10.4	28	48	62	13.2	29.0	31.7	€ 9,15	€ 6,40	€ 5,49
10640220	M12	12	15.8	11.9	32	54	70	15.7	33.0	48.8	€ 10,90	€ 7,63	€ 6,54
10640225	M12x1.25	12	15.8	11.9	32	54	70	15.7	33.0	48.8	€ 10,90	€ 7,63	€ 6,54
10640230	M12x1.50	12	15.8	11.9	32	54	70	15.7	33.0	48.8	€ 10,90	€ 7,63	€ 6,54
10640235	M14	14	18.8	13.2	36	60	78	16.6	36.0	65.8	€ 12,20	€ 8,55	€ 7,32
10640240	M14x1.50	14	18.8	13.2	36	60	78	16.6	36.0	65.8	€ 12,20	€ 8,55	€ 7,32
10640245	M16	16	20.8	14.9	42	66	87	20.0	37.0	80.0	€ 13,51	€ 9,45	€ 8,10
10640250	M16x1.50	16	20.8	14.9	42	66	87	20.0	37.0	80.0	€ 13,51	€ 9,45	€ 8,10
10640255	M18x1.50	18	22.8	16.4	46	72	95	22.4	42.5	95.0	€ 16,34	€ 11,44	€ 9,81
10640260	M20x1.50	20	24.8	17.8	50	78	103	24.6	47.0	107	€ 22,67	€ 15,87	€ 13,60
10640265	M22x1.50	22	28.0	20.0	54	84	115	26.0	48.0	143	€ 29,41	€ 20,52	€ 17,65

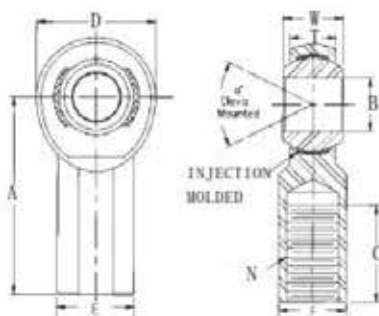
Rod Ends heavy duty inner thread

Rod Ends Chromoly steel, heat treated and with nylon (Teflon®/Kevlar®) race. Strongest Metric Rod Ends Ever! In addition to providing added strength, the injection molded race also won't "pound out" like traditional PTFE (Teflon®) liners, increasing the longevity of your rod ends. These rod ends are good

choice for motorsports and off-road applications.

The body is machined with a significant groove going all the way around the interior of the body. The ball is then inserted into the machined slot and a Teflon®/Kevlar® material is injected. These heavy duty rod ends are commonly used for their high strength and durability and are completely self-sealing and self-lubricating because of their Teflon®/Kevlar® injection molded race that keeps dirt and debris out.

Link Bearings



BALL

- 52100 Bearing Steel
- Heat Treated Hrc 58-64
- Hard Chrome Plated
- Precision cut

LINER

- PTFE
- Kevlar
- Self-Lubricating
- Self-Sealing

BODY

- Chromoly Steel
- Heat Treated
- Protective Coated for Corrosion Resistance

Art. code	N	B	W	T	D	A	E	F	C	Static load kN	Price 1-9	Price 10-24	Price 25 <
Right Thread													
10640102	M5	5	8	6.0	18	27	11	9	8	19.5	€ 6,76	€ 5,07	€ 4,23
10640107	M6	6	9	6.75	20	30	13	11	9	21.2	€ 7,52	€ 5,64	€ 4,70
10640112	M8	8	12	9.0	24	36	16	14	12	29.2	€ 8,36	€ 6,27	€ 5,23
10640117	M10	10	14	10.50	28	43	19	17	15	48.8	€ 9,44	€ 7,08	€ 5,90
10640122	M12	12	16	12.0	32	50	22	19	18	58.5	€ 11,12	€ 8,34	€ 6,95
10640127	M12x1.25	12	16	12.0	32	50	22	19	18	58.5	€ 11,12	€ 8,34	€ 6,95
10640132	M12x1.50	12	16	12.0	32	50	22	19	18	58.5	€ 11,12	€ 8,34	€ 6,95
10640137	M14	14	19	13.50	36	57	25	22	21	68.3	€ 13,20	€ 9,90	€ 8,25
10640142	M14x1.50	14	19	13.50	36	57	25	22	21	68.3	€ 13,20	€ 9,90	€ 8,25
10640147	M16	16	21	15.0	42	64	27	22	24	80.0	€ 17,12	€ 12,84	€ 10,70
10640152	M16x1.50	16	21	15.0	42	64	27	22	24	80.0	€ 17,12	€ 12,84	€ 10,70
10640157	M18x1.50	18	23	16.50	46	71	31	27	27	95.0	€ 21,24	€ 14,31	€ 11,93
10640162	M20x1.50	20	25	18.0	50	77	34	30	30	107	€ 28,92	€ 21,69	€ 18,08
Left Thread													
10640202	M5	5	8	6.0	18	27	11	9	8	19.5	€ 6,76	€ 5,07	€ 4,23
10640207	M6	6	9	6.75	20	30	13	11	9	21.2	€ 7,52	€ 5,64	€ 4,70
10640212	M8	8	12	9.0	24	36	16	14	12	29.2	€ 8,36	€ 6,27	€ 5,23
10640217	M10	10	14	10.50	28	43	19	17	15	48.8	€ 9,44	€ 7,08	€ 5,90
10640222	M12	12	16	12.0	32	50	22	19	18	58.5	€ 11,12	€ 8,34	€ 6,95
10640227	M12x1.25	12	16	12.0	32	50	22	19	18	58.5	€ 11,12	€ 8,34	€ 6,95
10640232	M12x1.50	12	16	12.0	32	50	22	19	18	58.5	€ 11,12	€ 8,34	€ 6,95
10640237	M14	14	19	13.50	36	57	25	22	21	68.3	€ 13,20	€ 9,90	€ 8,25
10640242	M14x1.50	14	19	13.50	36	57	25	22	21	68.3	€ 13,20	€ 9,90	€ 8,25
10640247	M16	16	21	15.0	42	64	27	22	24	80.0	€ 17,12	€ 12,84	€ 10,70
10640252	M16x1.50	16	21	15.0	42	64	27	22	24	80.0	€ 17,12	€ 12,84	€ 10,70
10640257	M18x1.50	18	23	16.50	46	71	31	27	27	95.0	€ 21,24	€ 14,31	€ 11,93
10640262	M20x1.50	20	25	18.0	50	77	34	30	30	107	€ 28,92	€ 21,69	€ 18,08

Link Bearings tube adapters

Welding bushings light model for rod ends.
Made from Crmo steel.



Tube adapters light right thread

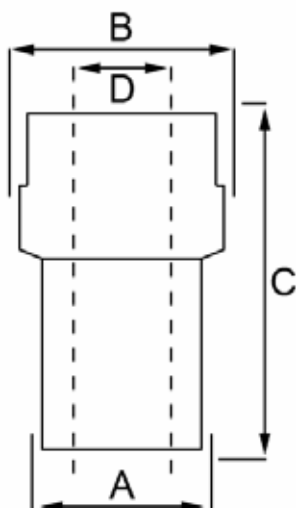
Art. code	Size	For tube	Price 1-9	Price 10-24	Price 25 <
10640405	M6	15x1.5	€ 4,79	€ 3,36	€ 2,87
10640410	M8	15x1.5	€ 4,79	€ 3,36	€ 2,87
10640415	M8	20x1.5	€ 5,23	€ 3,67	€ 3,13
10640420	M10	20x1.5	€ 5,23	€ 3,67	€ 3,13
10640425	M10	25x1.5	€ 5,66	€ 3,96	€ 3,41
10640430	M12	20x1.5	€ 4,97	€ 3,47	€ 2,99
10640435	M12	25x1.5	€ 6,54	€ 4,57	€ 3,93
10640440	M12x1.25	20x1.5	€ 5,23	€ 3,67	€ 3,13
10640445	M12x1.25	25x1.5	€ 6,54	€ 4,57	€ 3,93
10640450	M12x1.50	20x1.5	€ 5,23	€ 3,67	€ 3,13
10640455	M12x1.50	25x1.5	€ 6,54	€ 4,57	€ 3,93
10640460	M14	25x1.5	€ 6,54	€ 4,57	€ 3,93
10640465	M14	30x1.5	€ 7,84	€ 5,49	€ 4,71
10640470	M14x1.50	25x1.5	€ 6,54	€ 4,57	€ 3,93
10640475	M14x1.50	30x1.5	€ 7,84	€ 5,49	€ 4,71
10640480	M16	30x1.5	€ 7,84	€ 5,49	€ 4,71
10640485	M16	30x2.0	€ 7,46	€ 5,22	€ 4,47
10640490	M16	35x1.5	€ 8,72	€ 6,11	€ 5,23
10640495	M16	35x2.0	€ 8,72	€ 6,11	€ 5,23
10640500	M16x1.50	30x1.5	€ 7,84	€ 5,49	€ 4,71
10640505	M16x1.50	30x2.0	€ 7,84	€ 5,49	€ 4,71
10640510	M16x1.50	35x1.5	€ 8,72	€ 6,11	€ 5,23
10640515	M16x1.50	35x2.0	€ 8,72	€ 6,11	€ 5,23
10640520	M18x1.50	35x2.0	€ 8,72	€ 6,11	€ 5,23
10640525	M20x1.50	35x2.0	€ 8,72	€ 6,11	€ 5,23

Tube adapters light left thread

Left hand thread version has a groove for easy recognizing.

Art. code	Size	For tube	Price 1-9	Price 10-24	Price 25 <
10640605	M6	15x1.5	€ 4,79	€ 3,36	€ 2,87
10640610	M8	15x1.5	€ 4,79	€ 3,36	€ 2,87
10640615	M8	20x1.5	€ 5,23	€ 3,67	€ 3,13
10640620	M10	20x1.5	€ 5,23	€ 3,67	€ 3,13
10640625	M10	25x1.5	€ 5,66	€ 3,96	€ 3,41
10640630	M12	20x1.5	€ 4,97	€ 3,47	€ 2,99
10640635	M12	25x1.5	€ 6,54	€ 4,57	€ 3,93
10640640	M12x1.25	20x1.5	€ 5,23	€ 3,67	€ 3,13
10640645	M12x1.25	25x1.5	€ 6,54	€ 4,57	€ 3,93
10640650	M12x1.50	20x1.5	€ 5,23	€ 3,67	€ 3,13
10640655	M12x1.50	25x1.5	€ 6,54	€ 4,57	€ 3,93
10640660	M14	25x1.5	€ 6,54	€ 4,57	€ 3,93
10640665	M14	30x1.5	€ 7,84	€ 5,49	€ 4,71
10640670	M14x1.50	25x1.5	€ 6,54	€ 4,57	€ 3,93
10640675	M14x1.50	30x1.5	€ 7,84	€ 5,49	€ 4,71
10640680	M16	30x1.5	€ 7,84	€ 5,49	€ 4,71
10640685	M16	30x2.0	€ 7,46	€ 5,22	€ 4,47
10640690	M16	35x1.5	€ 8,72	€ 6,11	€ 5,23
10640695	M16	35x2.0	€ 8,72	€ 6,11	€ 5,23
10640700	M16x1.50	30x1.5	€ 7,84	€ 5,49	€ 4,71
10640705	M16x1.50	30x2.0	€ 7,84	€ 5,49	€ 4,71
10640710	M16x1.50	35x1.5	€ 8,72	€ 6,11	€ 5,23
10640715	M16x1.50	35x2.0	€ 8,72	€ 6,11	€ 5,23
10640720	M18x1.50	35x2.0	€ 8,72	€ 6,11	€ 5,23
10640725	M20x1.50	35x2.0	€ 8,72	€ 6,11	€ 5,23





Welding bushings for rod ends

Welding bushings for rod ends. Threaded inserts for rod ends heavy duty. Made from steel 52 with two flat sides. The left-thread versions has a groove for easy recognizing.

Art. code	D	C mm	B mm	A mm	Wrench size	Price
10641500	M10 right	30	20	17	17	€ 6,25
10641505	M12 right	35	25	22	19	€ 6,50
10641510	M14 right	35	30	27	26	€ 6,75
10641515	M16 right	40	30	26	26	€ 6,95
10641520	M18x1.5 right	40	35	30	26	€ 9,25
10641525	M20x1.5 right	40	35	30	26	€ 9,25
10641530	M10 left	30	20	17	17	€ 6,25
10641535	M12 left	35	25	22	19	€ 6,50
10641540	M14 left	35	30	27	26	€ 6,75
10641545	M16 left	40	30	26	26	€ 6,95
10641550	M18x1.5 left	40	35	30	26	€ 9,25
10641555	M20x1.5 left	40	35	30	26	€ 9,25

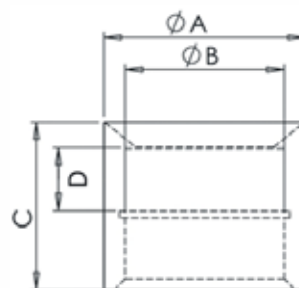


Welding bushings

Welding bushings for spherical bearings Link Bearings. Made of crmo steel

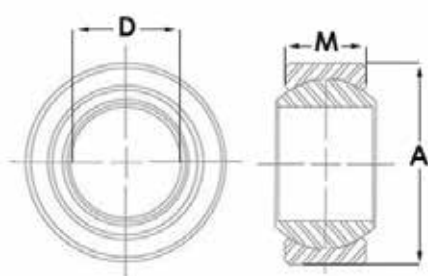
Link Bearings

Art. code	Size A mm	Size B mm	Size C mm	Size D mm	Type	Price 1-9	Price 10-24	Price 25<
10641775	28	22	30	10.50	10	€ 4,99	€ 3,54	€ 2,95
10641780	34	26	32	12	12	€ 6,11	€ 4,32	€ 3,61
10641785	37	29	33.50	15	14	€ 7,21	€ 5,11	€ 4,26
10641790	40	32	35	15	16	€ 8,06	€ 5,72	€ 4,77
10641795	43	35	35	16.50	18	€ 9,15	€ 6,50	€ 5,43
10641800	48	40	35	18	20	€ 10,46	€ 7,42	€ 6,19



Spherical Bearings

The best choice for traditional spherical bearings. Reasonably priced. Made from CrMo steel with self-lubricating Teflon liner.

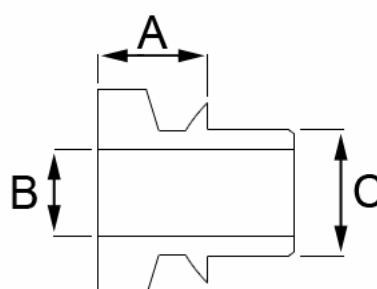


Art. code	Size D mm	Size A mm	Size M mm	Price 1-9	Price 10-24	Price 25<
10641230	10	22	10.50	€ 7,41	€ 5,28	€ 4,40
10641235	12	26	12	€ 8,29	€ 5,89	€ 4,91
10641240	14	29	13.50	€ 9,26	€ 6,67	€ 5,56
10641245	16	32	15	€ 10,90	€ 7,76	€ 6,47
10641250	18	35	16.50	€ 14,16	€ 10,04	€ 8,38
10641255	20	40	18	€ 16,99	€ 12,09	€ 10,08

Misalignment bushings

Made from stainless steel, perfect fit

Art. code	C mm	B mm	A mm	Price
10640800	10	8	5	€ 2,61
10640805	12	10	7	€ 2,95
10640815	14	10	5	€ 3,12
10640825	16	12	5	€ 3,29
10640830	18	14	8	€ 4,63
10640835	3/4"	16	8	€ 5,11
10640840	20	16	8	€ 5,11



Right thread

Art. code	Thread	Height mm	Wrench-size	Price
10106306	M6	3	10	€ 0,50
10106308	M8	4	13	€ 0,65
10106310	M10	5	17	€ 1,00
10106312	M12	6	19	€ 1,25
10106474	M12x1.25	6	19	€ 1,50
10106475	M12x1.50	6	19	€ 1,50
10106314	M14	7	22	€ 1,50
10106478	M14x1.50	7	22	€ 1,75
10106416	M16	8	24	€ 1,75
30112005	M16x1.50	8	24	€ 0,86
10106418	M18x1.50	9	27	€ 1,95
10106420	M20x1.50	10	30	€ 2,25
10106450	5/8 UNF	9	23.8	€ 1,75
10106455	3/4 UNF	11	28.6	€ 1,95

Half nuts DIN 439B

Half nuts, electrolytic galvanized, to lock rod ends etc.

Right hand threaded and left hand threaded version.



Link Bearings

Left thread

Art. code	Thread	Height mm	Wrench-size	Price
10106506	M6	3	10	€ 0,90
10106508	M8	4	13	€ 0,95
10106510	M10	5	17	€ 1,10
10106512	M12	6	19	€ 1,35
10106570	M12x1.25	10	19	€ 1,75
10106575	M12x1.50	6	19	€ 1,75
10106514	M14	7	22	€ 1,65
10106515	M14x1.50	7	22	€ 1,85
10106516	M16	8	24	€ 1,85
10106517	M16x1.50	8	24	€ 1,85
10106518	M18x1.50	9	27	€ 2,25
10106520	M20x1.50	10	30	€ 2,50
10106550	5/8 UNF	9	23.8	€ 1,75
10106555	3/4 UNF	11	28.6	€ 1,95

Rubber caps

Protects against moisture and dirt, used for rod ends.

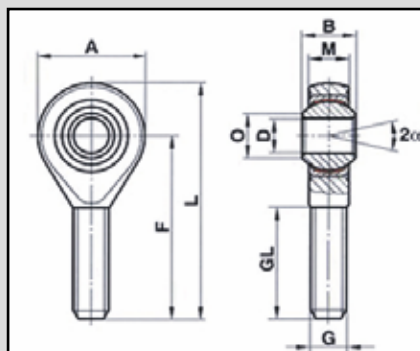
Art. code	Type	Size	Price
10641382	RERS 2	for M10/M12	€ 6,25
10641383	RERS 3	for M14/M16/M18	€ 7,25
10641384	RERS 4	for M20	€ 8,75
10641385	RERS 5	for M27/M30	€ 9,58



Rod ends Fluro

Rod end with spherical plain bearing and PTFE liner. For motor-sports. Maintenance-free. Made from forged Chrome Molybdenum 42CrMo4. Inner ring bearing steel (100Cr6) ground, hardened and polished. For higher dynamic loads.

Rod ends

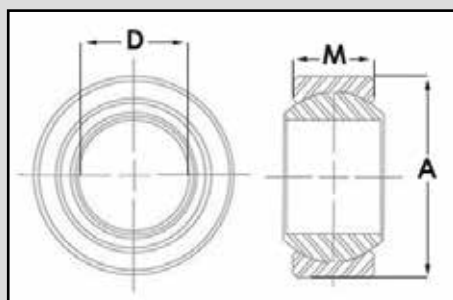


Art. code	G	D	B	M	A	F	L	O	GL	Static Load	Price 1-9
Right Thread											
10641308	M8	8	12	9	24	42	54	10.4	25	19.5	€ 13,75
10641310	M10	10	14	10.5	28	48	62	12.9	29	31.4	€ 14,75
10641312	M12	12	16	12	32	54	70	15.4	33	42	€ 18,50
10641314	M14	14	19	13.5	36	60	78	16.8	38	57	€ 22,00
10641316	M16	16	21	15	42	66	87	19.3	40	67	€ 29,75
10641318	M18x1.5	18	23	16.5	46	72	95	21.8	44	81.5	€ 36,00
10641320	M20x1.5	20	25	18	50	78	103	24.3	47	93.5	€ 38,50
Left thread											
10641408	M8	8	12	9	24	42	54	10.4	25	19.5	€ 13,75
10641410	M10	10	14	10.5	28	48	62	12.9	29	31.4	€ 14,75
10641412	M12	12	16	12	32	54	70	15.4	33	42	€ 18,50
10641414	M14	14	19	13.5	36	60	78	16.8	38	57	€ 22,00
10641416	M16	16	21	15	42	66	87	19.3	40	67	€ 29,75
10641418	M18x1.5	18	23	16.5	46	72	95	21.8	44	81.5	€ 36,00
10641420	M20x1.5	20	25	18	50	78	103	24.3	47	93.5	€ 38,50



Spherical bearings GLXSW

Spherical Bearings with PTFE lining, maintenance-free. Inner ring hardened, ground and polished chrome steel.



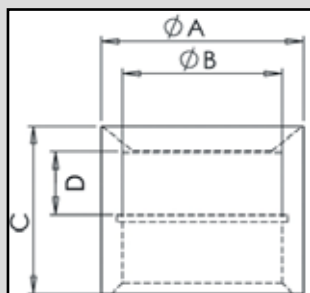
Art. code	Size D mm	Size A mm	Size M mm	Price
10641212	12	30	12	€ 9,61
10641214	14	34	13.50	€ 11,15
10641216	16	38	15	€ 13,23
10641218	18	42	16.50	€ 16,77
10641220	20	46	18	€ 18,85



Rod ends

Welding bushings for spherical bearings GLXSW

Welding Cups for spherical bearings GLXSW (10641212-220).
Made from Steel 52



Art. code	Size A mm	Size B mm	Size C mm	Size D mm	Type	Price 1-9
10641750	38	30	32	12	12	€ 9,25
10641755	42	34	33.50	13.50	14	€ 9,25
10641760	46	38	35	15	16	€ 9,25
10641765	50	42	34	16.50	18	€ 9,25
10641770	54	46	35	18	20	€ 9,25

Art. code	Bore Ø B mm	Thickness mm	Price
10312022	22	1.00	€ 0,16
10312026	26	1.20	€ 0,20
10312029	29	1.20	€ 0,33
10312030	30	1.20	€ 0,23
10312032	32	1.20	€ 0,24
10312034	34	1.50	€ 0,33
10312035	35	1.50	€ 0,34
10312038	38	1.50	€ 0,46
10312040	40	1.75	€ 0,43
10312042	42	1.75	€ 0,47
10312046	46	1.75	€ 0,82

Standard internal circlips

The most common form of axially fitted retaining ring for bores with grooves. Especially for fitting the spherical bearings into the welding cups. Material of carbon spring steel with phosphated and oil finish.



Lockfast quick release fasteners

Specially designed for racing and aircraft industries for mounting panels, bodywork, dashboards, fenders, bumpers, firewall etc. etc. This system ensures you a very solid rattling free connection. Within seconds you can mount or dismount the complete bodywork or plating from your car, motor or anything else.

Lockfast



Self eject slotted buttons

Made from electrolytic galvanized steel. You can mount this button on the product without or with blind rivets. Mostly these buttons are not mounted with rivets so cleaning is easier and you can see the welding plate when mounting. Button complete with spring, like the picture is showing.

Art. code	Clamping range	Price 1-49	Price 50-99	Price >100
39132205	12,70 (0,5")	€ 2,35	€ 1,90	€ 1,60
39132207	17,78 (0,7")	€ 2,50	€ 2,00	€ 1,70



Slotted button oval head

Oval head slotted button works great for fastening your panels together with the ease of removing it with just a twist of the head. To be used in combination with the steel panel spring 1
Art. code: 39132208

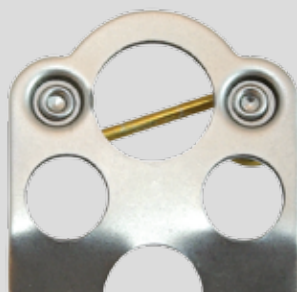
1-49	€ 1,50
50-100	€ 1,25
> 100	€ 1,00



Steel panel spring 1"

A quick and easy method of fastening panels. Fasten with 1/8" grip rivets. Can be used in combination with Oval head slotted button.
Art. code: 39132217

1-49	€ 0,75
50-100	€ 0,70
> 100	€ 0,65



Welding plate light

Made from very good weldable steel. The solution for a light racing car. Including mounted spring.
Art. code: 39132215

1-49	€ 1,50
50-100	€ 1,25
> 100	€ 1,00



Welding plate standard

Made from very good weldable steel. You can easily bend this plate in a vice or folding machine to create the best angle for mounting your material. You can also shorten this or create a radius for several solutions. Including mounted spring.
Art. code: 39132210

1-49	€ 2,00
50-100	€ 1,75
> 100	€ 1,50



€ 2,95

Welding plate punch

Made from electrolytic galvanized steel with a sharp pointer to mark your bodywork before drilling the hole. Use always a stepdrill like 12825410 so you don't get sharp burrs and have a good clean and equal hole
Art. code: 39132220





Panel spring adjuster

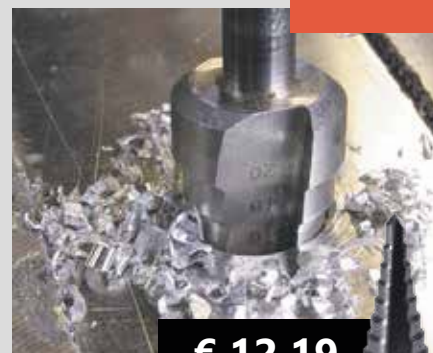
For years there was never the right tool to adjust your panel button springs. Push on them with a screwdriver and it would deform and weaken the spring, use a pair of pliers and again you would deform and weaken the spring. Even worse, it could break the spring and you have to drill it out and put in another. Lockfast's panel spring adjuster is the only right tool for the job. It pulls the spring evenly like a panel button. The panel spring adjuster is quick and easy to use, lightweight, and durable. This is a must have for any racing tool box. Not any longer vibrating of the panel is the result.

Art. code: 39132225

€ 59,00



**Lockfast
Tools**



Stepdrill

€ 12,19

Made for drilling holes in Aluminum, Steel, Plastic, Polyester, Carbon and Kevlar. You need to drill 16 mm holes in your material to use the buttons. With this drill you can easily drill without burrs and always get a clean and equal hole.

Art. code: 12825410

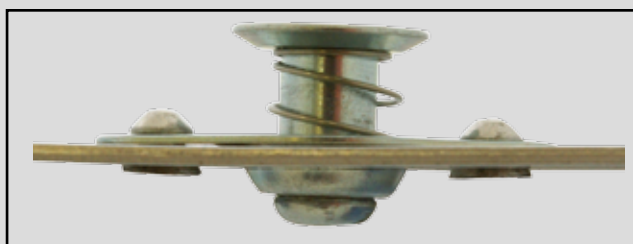


€ 27,50

Quick fastener tool

Heavy duty tool made from high strength steel and plated for durability. Designed for use with Lockfast quarter turn fasteners. Grip handle for faster adjustment, installation and removal.

Art. code: 39132230



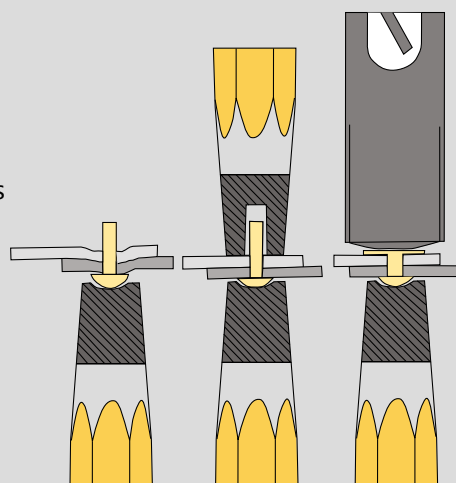
Setting & snap toolset

Complete with 100 solid round head aluminum rivets Ø 3 x 6 mm. The setting of these aluminum fasteners requires access to both sides of a structure. Solid rivets are one of the oldest and most reliable types of fasteners and are used in applications where reliability and safety counts.

Solid rivets consist simply of a shaft and head that are deformed with a hammer. Perfect application for these solid rivets is for mounting the self eject buttons. Quick and easy to use, lightweight and durable. This is a must have for any racing tool box. No vibration of the panel is the result.

Art. code: 10340640

€ 18,95



Radius saws

The easiest way to cut a radius hole in tubes. To be used in combination with an electrical drilling machine and clamp the tool simply in a vice.

Radiussaw Profi

- Adjustable in 15 seconds.
- For straight and angled notches between 0 and 50 degrees, and offset.
- Capacity: Ø 20 mm (3/4") – Ø 75 mm (3")
- Complete CNC machined.

- Heavy duty frame of 30 mm solid steel.
- Adjustable tube clamp.
- Easy mounting and very easy to use.

Art. code: 14702030



€ 329,00

Radius-
saws

Radiussaw The Beast

The king of the notchers worldwide, the ultimate in hole saw tube notching. 2 clamps to allow you to notch on a already bend tube as well.

- Capacity: Ø 20 mm (3/4") – Ø 75 mm (3")
- For straight and angled notches between 0 and 50 degrees, and offset in straight and already bend tube.
- 1" Ground & Polished Stainless Steel Shaft
- Double sealed needle bearings.
- 2 clamps to allow you to notch on a bend.
- Requires a normal 1/2" hand drill.
- Total weight 23 kg

Art. code: 14702035



€ 599,00

Radiussaw TN-100

- Capacity 20 up to 50 mm.
 - Adjustable in 15 seconds.
 - For straight and angled notches between 0 and 50 degrees.
- Art. code: 14702000



€ 250,00

Art. code	OD Ø mm	Cutting depth mm	Price
12866620	20	38	€ 5,85
12866622	22	38	€ 5,85
12866625	25	38	€ 7,38
12866628	28	38	€ 7,38
12866630	30	38	€ 7,38
12866632	32	38	€ 7,38
12866635	35	38	€ 8,69
12866638	38	38	€ 8,69
12866640	40	38	€ 8,69
12866646	46	38	€ 9,55
12866648	48	38	€ 9,55
12866651	51	38	€ 9,55
12866660	60	38	€ 10,90
12866670	70	38	€ 13,04



Bi-Metal holesaws

Holesaws variable tooth pitch 4/6 tpi and positive rake angle for faster cutting without vibration. Holesaws with a diameter of 32 mm or more have two takeout holes for extra secure mounting on the holder.

Radius-saws



Hole saw sets

Bi-Metal Holesaw set with positive rake angle, variable tooth pitch 4/6 and a cutting depth of 38 mm. Suitable for aluminum, plastic, wood, stainless steel and many steels. Including 2 adapters and 1 center drill in durable polypropylene case.

Set 9 pcs.

19-22-29-35-38-44-51-57-64 mm.
Art. code: 12866780

€ 106,43

Set 12 pcs.

16-19-22-25-29-32-35-38-44-51-64-76 mm.
Art. code 12866785

€ 122,92



€ 15,22

Holesaw adapter hexagon

Quick-change holder Nr. 2 for the Bi-metal hole saws. Complete with HSS center drill. For hole saws 32 up to 152 mm.
Art. code: 12866800



€ 7,96

Holesaw adapter round

Holder Nr. 4 for the Bi-metal hole saws. Complete with HSS drill. For mounting hole saws 14 till 30 mm.
Art. code: 12866802

Radius- saws



Art. code	Ø mm	Price
14713700	20.00	€ 54,00
14713702	21.30	€ 54,00
14713705	22.00	€ 56,00
14713710	25.00	€ 59,00
14713712	26.90	€ 59,00
14713713	28.00	€ 59,00
14713715	30.00	€ 59,00
14713717	32.00	€ 59,00
14713718	33.70	€ 59,00
14713720	35.00	€ 62,00
14713723	38.00	€ 62,00
14713725	40.00	€ 62,00
14713727	42.40	€ 65,00
14713730	45.00	€ 65,00
14713733	48.30	€ 65,00
14713735	50.00	€ 73,00
14713740	60.30	€ 85,00
14713745	76.10	€ 95,00



Roller wheels

Sanding belt roller for the tubenotcher CP 100.
Comes complete with bearings.

Radius- saws



€ 16,00

Grinding belts

Sanding belts 100x2000 mm, grit 40. Special ceramic bonded abrasive belts. For the best and fastest grinding results. Not comparable with common belts. This one is of a much, much better quality!

Art. code: 14713690

Radiusgrinder CP-100

The CP 100 tubenotcher is an innovative, strong machine designed by professionals. Suitable for daily use. Extra attention is put into quick and easy machine operation. Quick adjustment and easy in maintenance. The strong clamping system ensures excellent results. This machine comes with a 3 year warranty on the construction. When it comes to grinding, you are one step ahead with this machine.

- Possibility to grind off-center
- Strong clamping system
- Deburr surface with open lid
- 2 residue bins, front and rear
- 1 Hexagon key for setting machine
- Easy interchangeable roller system
- 1 x Roll 42.2 mm standard
- 1 x Sanding belt 100 x 2000 mm, grit 36
- Roll holder (capacity: 8 rolls)

Art. code: 14713695

€ 1.295,00

Aluminum

Aluminum tubes

Aluminum tubes. Lightweight thin walled aluminum tube. Often used as cooling water pipes in motorsport.

Art. code	Ø mm	WT mm	Length	Price
39134030	30	1.50	3 mtr.	€ 9,95
39134035	35	1.50	3 mtr.	€ 11,50
39134038	38	1.50	3 mtr.	€ 12,95

Hand beading tool

Essential for every mechanic to create your own air-, water- and oil hose/pipe system!

A compact and very clever tool, the tool makes quickly and easily a bead of 1 mm in aluminum and copper pipes or tubes. From 16 mm to 100 mm in diameter. Max wall thickness of tube 1,5 mm.

To avoid sliding of hoses it is the perfect way to do. Cannot be used with 'hard' pipes such as steel and stainless steel

Art. code: 14705000

€ 199,00





Aluminum sheets

Application: floorplate, firewall, engine protection etc.
Cannot be delivered by our forwarder. Can only be collected by the customer at our warehouse in Winkel (NL).



Aluminum

Art. code	Thickness mm	Width mm	Lentgh mm	Version	Price
13832530	1	1250	2500	Aluminum sheet half hard	€ 51,55
13832540	2	1250	2500	Aluminum sheet half hard	€ 104,40
13832550	2	1000	2000	Aluminum sheet hard	€ 90,72



Pedestal for bead roller

Pedestal for Bead Roller
Art. code: 14705050

€ 165,00

Bead roller for aluminum sheets

This Bead Roller makes it very easy to add strength and rigidity to aluminum sheet parts, like floor panels and firewalls. Comes complete with ¼" half round roll set.

Art. code: 14705010

€ 335,00



Steelsheets Strenx/Docol

Strenx = equal to Cmro steel High strength, excellent formability and good weldability Application: Brackets for suspension, welding tabs, reinforcement brackets or other extreme heavy duty solutions.

Art. code	Thickness mm	Size mm	Tensile strength	Brand	Price
39132990	1.00	500x1250	1000N/mm ²	Docol	€ 19,00
39132992	1.50	500x1250	1000N/mm ²	Docol	€ 24,50
39132905	2.00	600x1030	700N/mm ²	Strenx	€ 29,00
39132910	3.00	500x1250	700N/mm ²	Strenx	€ 45,00
39132915	4.00	500x1250	700N/mm ²	Strenx	€ 59,00
39132920	5.00	500x1500	700N/mm ²	Strenx	€ 89,00

Strenx/ Docol

Blind rivet tool M4-M10

Patented hand tool set for installing open end rivet nuts in: steel, stainless steel (up to M8), aluminum and brass. This "spin" action tool (different from the conventional hand plier) is compact and versatile. Ease of use in applications having limited access. Simply turn the knob until correct installation has been achieved. Delivered in a durable polypropylene case.

Capacity steel, aluminium and brass: M4 - M10

Capacity Stainless steel A2: M4 - M8

Art. code: 10353405

€ 109,00

Assortment of open end rivet nuts

Box with a total of 400 pieces open end rivet nuts M5-M6-M8-M10.

Steel and aluminum.

Art. code: 10340620

€ 39,00

Cleco fasteners and Cleco pliers are an indispensable part of any mechanic's toolkit. Clecos allow you to hold two pieces of sheet metal together in proper alignment for drilling, riveting, gluing, marking, fitting or other operations. These Cleco fasteners are commonly used in aviation industry, but nowadays most car body workshops have also discovered the easy use of Cleco's tools.



Assortment of Clecos

Assorted Clecos in plastic case
Containing:

- 20 Clecos copper 3,3mm
- 20 Clecos black 4,1mm
- 20 Clecos bronze 5,0mm
- 5 clamp clecos 1/2"
- 1 Cleco pliers

Art. code: 10351699

€ 79,00



Cleco



HSS sheet drills

Sheet drills specifically tailored to the dimensions of Cleco's

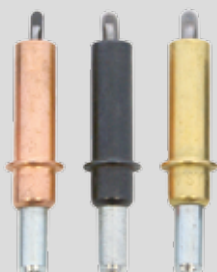
Art. code	Ø mm	Price
12804033	3.30	€ 1,10
12804041	4.10	€ 1,33
12804050	5.00	€ 1,48

Cleco plier

Special plier to easily mount and remove the Clecos.

Art. code: 10351700

€ 9,95



Clecos

Per piece.

Art. code	Ø mm	Clamping range	Color	Price 1-9	Price >10
10351720	3.30	0-6 mm	Copper	€ 1,48	€ 0,99
10351730	4.10	0-6 mm	Black	€ 1,48	€ 0,99
10351740	5.00	0-6 mm	Bronze	€ 1,48	€ 0,99



Cleco clamps

Per piece.

Art. code	Size	Clamping range	Jaw depth	Price 1-9	Price >10
10351770	1/2"	0-12 mm	12.70 (1/2")	€ 5,38	€ 3,59
10351772	1"	0-12 mm	25.40 (1")	€ 6,37	€ 4,25

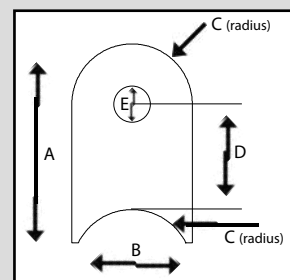
Welding brackets

Domex 700 Reinforcement brackets. These laser cut brackets are very strong, ideal to weld-in your construction and can be used in many applications. Very easy to weld with standard SG2 wire.



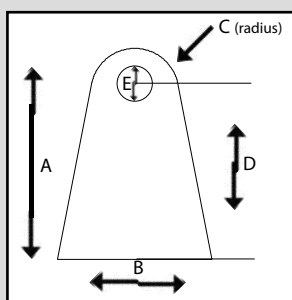
Bracket A series

Mounting brackets radius.
20 pieces per bag



Art. code	Type	A mm	B mm	C mm	D mm	E mm	Thickness mm	Price per bag
39132005	Nr. 1	55.00	40.00	20.00	35.00	12.00	4.00	€ 28,80
39132010	Nr. 2	35.00	30.00	15.00	20.00	10.00	4.00	€ 22,20
39132015	Nr. 3	35.00	29.00	12.50	23.00	10.00	4.00	€ 21,60
39132020	Nr. 4	30.00	25.00	12.50	18.00	8.00	4.00	€ 18,60

Welding brackets



Bracket B series

Straight reinforcements brackets.
20 pieces per bag

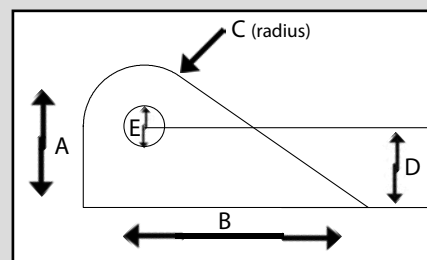


Art. code	Type	A mm	B mm	C mm	D mm	E mm	Thickness mm	Price per bag
39132025	Nr. 5	30.00	20.00	10.00	20.00	6.00	3.00	€ 21,00
39132030	Nr. 6	32.00	25.00	10.00	22.00	8.00	3.00	€ 16,50
39132040	Nr. 8	65.00	70.00	20.00	45.00	12.00	4.00	€ 33,60
39132055	Nr. 11	48.00	35.00	10.00	40.00	8.00	3.00	€ 23,40
39132076	Nr. 16	40.00	50.00	15.00	25.00	10.00	3.00	€ 23,20
39132081	Nr. 21	21.00	12.00	6.00	15.00	6.00	2.00	€ 18,40
39132082	Nr. 22	21.00	20.00	6.00	15.00	6.00	2.00	€ 12,00
39132083	Nr. 23	20.00	10.00	5.00	15.00	5.00	2.00	€ 18,40
39132084	Nr. 24	20.00	20.00	5.00	15.00	5.00	2.00	€ 12,00



Bracket C series

Universal brackets
20 pieces per bag



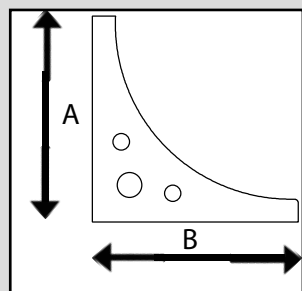
Art. code	Type	A mm	B mm	C mm	D mm	E mm	Thickness mm	Price per bag
39132045	Nr. 9	65.00	70.00	20.00	45.00	12.00	4.00	€ 33,60
39132060	Nr. 12	50.00	100.00	20.00	30.00	12.00	4.00	€ 34,40
39132065	Nr. 13	30.00	60.00	10.00	20.00	8.00	3.00	€ 22,40
39132077	Nr. 17	35.00	70.00	15.00	20.00	10.00	3.00	€ 24,80
39132078	Nr. 18	18.00	40.00	8.00	10.00	6.00	2.00	€ 12,80

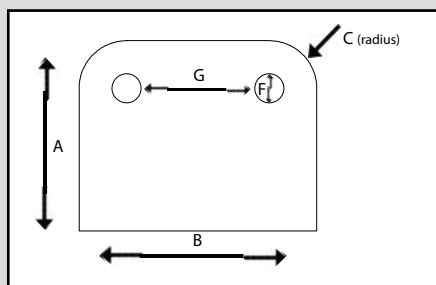
Welding brackets

Bracket D series

Reinforcements brackets.

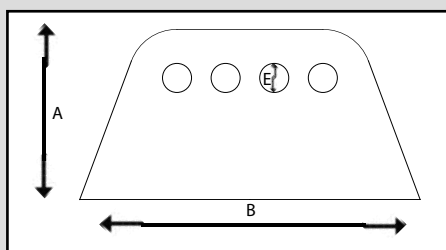
Art. code	Type	A mm	B mm	Thickness mm	Pieces per bag	Price per bag
39132050	Nr. 10	50.00	50.00	3.00	20	€ 34,20
39132070	Nr. 14	75.00	75.00	4.00	20	€ 40,80
39132075	Nr. 15	100.00	100.00	5.00	10	€ 36,60





Bracket Nr. 7
Universal brackets.
20 pieces per bag

Art. code	Type	A mm	B mm	C mm	E mm	G mm	Thickness mm	Price per bag
39132035	Nr. 7	40.00	50.00	6.00	3.00	30.00	2.00	€ 29,00

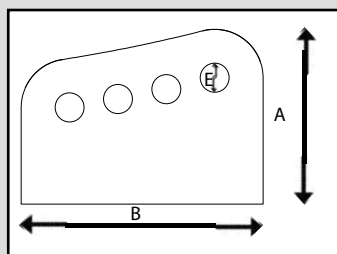


Bracket Nr. 19
Universal brackets.
10 pieces per bag

Art. code	Type	A mm	B mm	E mm	Thickness mm	Price per bag
39132079	Nr. 19	70.00	140.00	12	4.00	€ 35,20



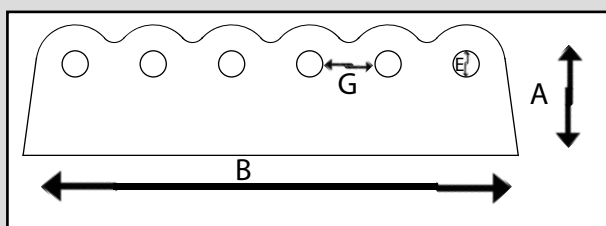
Welding brackets



Bracket Nr. 20
Universal brackets.
10 pieces per bag

Art. code	Type	A mm	B mm	E mm	Thickness mm	Price per bag
39132080	Nr. 20	72.00	100.00	12.00	4.00	€ 30,80

Bracket Nr. 25
Universal brackets.
20 pieces per bag



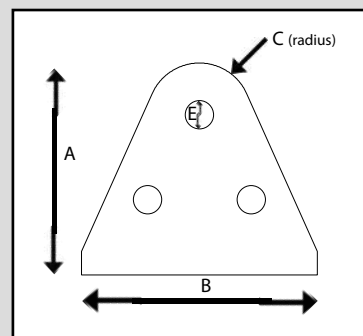
Art. code	Type	A mm	B mm	E mm	G mm	Thickness mm	Price per bag
39132085	Nr. 25	30.00	114.00	6.00	18.00	2.00	€ 41,60



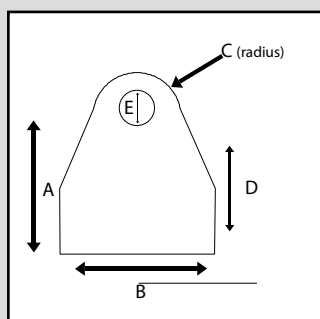


Bracket Nr. 26

Universal brackets.
20 pieces per bag



Art. code	Type	A mm	B mm	C mm	D mm	Thickness mm	Price per bag
39132086	Nr. 26	45.00	50.00	11.00	6.00	2.00	€ 24,80



Bracket Nr. 27

Universal brackets.
10 pieces per bag



Art. code	Type	A mm	B mm	C mm	D mm	E mm	Thickness mm	Price per bag
39132087	Nr. 27	40.00	50.00	11.00	27.00	11.00	4.00	€ 12,50

**Welding
brackets**



Brake pump plate

Material: Domex 700

Applicable with : Girling/Wilwood brake pump
Length : 103 mm
Width : 93 mm
Bolt hole : 8,5 mm (4x)
Diameter hole : 36,4 mm (2x)
Art. code: 39132110

€ 4,08



Dimple die

These high quality dimple dies are used to improve the strength and appearance of a panel and will flange an existing hole in sheet metal up to 3 mm thick. They work great in a hydraulic press.



Precision machined from hardened tool steel for years of use and each dimple die has a through hole drilled into both the male and female dies so they can be used in a few different ways.

The first method is they can be used in any H frame hydraulic press where the material you are dimpling is small enough to fit between the vertical frame rails of the press. Simply drill the appropriate size hole using an industry stand hole saw, then insert the male and female dies to the correct orientation then using the hydraulic cylinder, press the dimple dies down to flare the metal.

The second method is they can be bolted together using a standard grade 8 bolt M10, M12, M16 or M20 depending upon which dimple die size you have. This method is ideal for large pieces of metal that are too large to fit in a H frame style press, dimpling on a vehicle or dimpling after the fact. Well now you can with the through hole design that is standard on every die set we have in stock.

Art. code	Hole size mm	Bolt size	Max. thickness mm	Ø outside mm	Height mm	Price
39130415	15	M10	3	37	35	€ 13,00
39130420	20	M12	3	50	43	€ 20,00
39130425	25	M16	3	54	51	€ 20,00
39134030	30	M20	3	72	63	€ 39,00
39134040	40	M20	3	82	70	€ 44,00
39134050	50	M20	3	92	76	€ 47,00
39134060	60	M20	3	106	79	€ 58,00

Rollcage Accessories

Dimple die set 7 pcs.

High quality dimple die set consisting of in total 7 pieces dimple dies; 15, 20, 25, 30, 40, 50 and 60 mm. Used to improve the strength and appearance of a panel and will flange an existing hole in sheet metal up to 3 mm thick. They work great in a hydraulic press.

Art. code: 39130500

€ 225,00





Roll cage adapter

Weld-in cage connector of mild steel for cage tubes with an inner diameter of 36 mm.

Art. code: 39130200

€ 8,50



Price 1-9 Price <10

€ 5,00 € 4,17

Reinforcement Plate

A reinforcement plate is required when installing a seat belt. Strengthening of a seat belt at the assembly point is essential. When you mount a seatbelt on sheet metal, you need to put a reinforcing plate under it in order to prevent it from being pulled out of the floor.

This plate is provided with a nut for seat belt eye bolts (UNF thread 7/16 – 20) Size 50 x 80 x 2.5 mm.

Art. code: 39130300

Weld-on nut

Weld-On Wrench Hexes of mild steel that can be used in place of a hex style tube adapter. Simply use the smooth style tube adapters and slip the weld-on wrench hex over the tube. Weld it to the tube where it is most convenient for easy adjustment.

Art. code	Ø Tube mm	Hex size mm	Height mm	Price 1-9	Price 10-24	Price <25
39130020	20	27	19	€ 2,48	€ 1,84	€ 1,53
39130025	25	32	19	€ 2,67	€ 2,67	€ 1,67
39130030	30	36	19	€ 3,12	€ 2,34	€ 1,95
39130035	35	41	19	€ 3,34	€ 2,50	€ 2,09
39130040	40	46	19	€ 3,56	€ 2,67	€ 2,23



Seat Belt Eye Bolt UNF 7/16-20

This high-strength forged steel eyebolt is designed for mounting driver restraint harnesses with snap-in end plates. To be used in combination with our Seat Belt thread insert UNF 7/16-20.

Art. code: 39130090

€ 2,25



Rollcage Accessories

Metric weld in thread insert universal

Universal metric thread inserts allow for quicker installation and/or removal of your chassis components. These weld-on thread inserts are a strong and easy way to bolt brackets and accessories to your chassis when the back side of a component is not accessible. They're offered in metric thread sizes to suit your application needs.

Art. code	Inside thread	Length mm	Ø Shaft mm	Ø Flange mm	Price
39130110	M8	20	16	30	€ 4,00
39130120	M8	40	16	30	€ 4,95
39130130	M10	20	16	30	€ 4,00
39130140	M10	40	16	30	€ 4,95
39130100*	UNF 7/16-20	40	16	30	€ 4,95



* For seat belt eye bolt

Rollcage gussets

According to FIA standard. Made from Steel 37. Easy to apply to your roll cage.

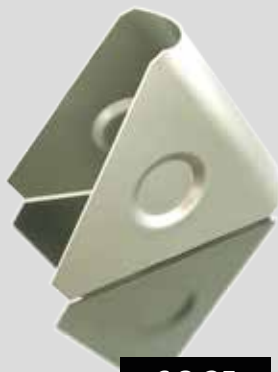
Closed version



€ 3,75

90°

Art. code: 39131020



€ 3,25

60°

Art. code: 39131015



€ 3,75

45°

Art. code: 39131010

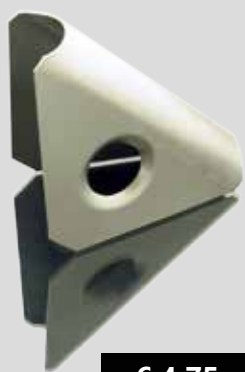


€ 3,50

30° (door)

Art. code: 39131005

Open version



€ 4,75

90°

Art. code: 39131040



€ 4,25

60°

Art. code: 39131035



€ 4,75

45°

Art. code: 39131030



€ 4,50

30° (door)

Art. code: 39131025

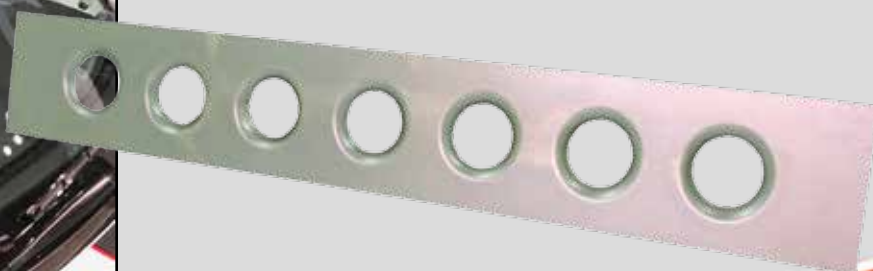
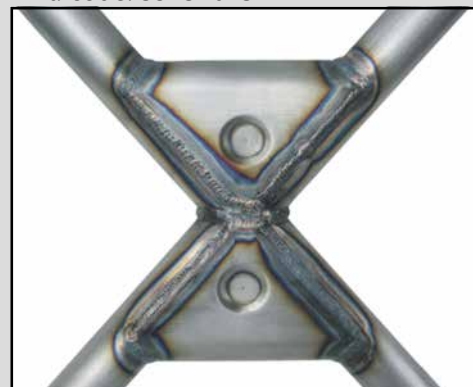
Rollcage Accessories

Reinforcement plate 500x75x1 mm

Roll cage straight reinforcement plate of mild steel with 7 holes 32 mm.

Art. code: 39131050

€ 5,00





Safety

The most important piece of your car is yourself, as the driver. Therefore you should protect yourself the best way possible.



Roll bar padding high density foam

Roll bar padding with offset hole provides more padding where it's needed towards the driver and fits closer to interior finish. It comes in a variety of colors for a custom installation and is of a flame-retardant high density foam for added safety. NOT TO BE USED OVER DRIVERS HEAD or for HEAD PROTECTION!

Roll bar padding high impact

The BEST roll bar padding available. U-shape design gives more padding and safety where it's needed towards the driver and fits closer to interior finish. This roll bar padding is far more effective in absorbing impact energy than standard foam roll bar padding or pipe insulation. Fire proof (self-extinguishes) high density energy absorbing padding, will not burn or drip molten bits on the driver. USE IN ALL AREAS WHERE HELMET CAN CONTACT ROLL CAGE

Art. code : 10889385



€ 14,95

Art. code	Color	Price
10889350	Black	€ 6,50
10889355	Red	€ 6,50
10889360	Blue	€ 6,50
10889365	Yellow	€ 6,50
10889370	Orange	€ 6,50
10889375	Purple	€ 6,50
10889380	Grey	€ 6,50

Foam sheet neoprene

With this peel and stick neoprene foam sheet you can add extra padding right where you need it. Ideal for your seat.

Art. code: 10889410

€ 65,00



Rayrim edge protection

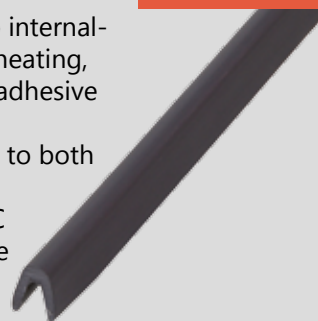
Rayrim edge protecting material is an extruded strip internally coated with a heat activated adhesive, so that by heating, the profile changes from "V" to "U" section and the adhesive bonds to the substrate profile.

The flexible nature of the product allows application to both internal and external radii, as well as straight edges, Continuous operating temperature is between -55°C to +80°C. The product provides protection under the most severe conditions. - Flexible - Selfadhesive



Art. code	A (max) mm	B (min) mm	C (min) mm	D (min) mm	E mm	Price p/mtr
10888005	1.00	0.90	4.80	1.60	1.25	€ 4,87
10888010	2.00	0.90	6.60	1.60	2.50	€ 7,96

Safety



Rod POM-C

Black colored POM-C hardly holds any water and is shockproof. A very good strength and chemical resistance. Approved for working temperatures from -40° up to 90°C. Also very good machining.

Art. code	Ø mm	Price p/mtr.
11278020	20	€ 6,62
11278030	30	€ 14,80
11278040	40	€ 25,12
11278050	50	€ 39,22
11278060	60	€ 56,40
11278100	100	€ 156,46

Rod Nylon 6

Cream/white color.

With very good mechanical properties. This material combines a very good tensile strength with a good abrasion, toughness. This material is approved for working temperatures till 100°C. The disadvantage of nylon is that it holds water so it will stretch out a bit. So don't use this for rotating parts in combination with moisture.

Art. code	Ø mm	Price p/mtr.
11275010	10	€ 1,84
11275016	16	€ 4,14
11275020	20	€ 5,50
11275025	25	€ 8,64
11275030	30	€ 12,32
11275035	35	€ 17,68
11275040	40	€ 20,68
11275050	50	€ 30,88
11275060	60	€ 44,42
11275070	70	€ 60,12
11275080	80	€ 78,90
11275090	90	€ 100,18
11275100	100	€ 123,44
11275150	150	€ 277,66

Plastic sheets PE300

Application: fenders, shielding, plating etc. Available in black and white color.

Length x width = 2000x1000 mm.

Art. code	Thickness mm	Color	Price
13832521	1.0	White	€ 12,42
13832522	2.0	White	€ 24,83
13832523	3.0	White	€ 34,18
13832510	1.0	Black	€ 12,42
13832511	2.0	Black	€ 24,83
13832512	3.0	Black	€ 34,18

Plastics & Rubbers

Vibration damper Type A

Cylindrical buffer made of black natural rubber (NR) with twin-sided galvanized outside thread. Characterized by elasticity, resistance, cold-resistance and excellent physical properties. Not suitable for petrol, grease, oil and ozone.

Art. code	Ø mm	Housing height mm	Thread	Thread length mm	Price p/mtr.
12596006	15	15	M4	13	€ 1,60
12596010	20	15	M6	15	€ 1,80
12596020	25	20	M6	18	€ 2,08
12596040	30	15	M8	20	€ 2,12
12596047	30	20	M8	20	€ 2,26
12596060	30	25	M8	20	€ 2,57
12596070	30	30	M8	20	€ 2,51
12596080	40	30	M8	23	€ 3,09
12596098	50	40	M10	28	€ 4,73
12596105	50	50	M10	28	€ 5,77
12596120	75	50	M12	37	€ 11,05



Vibration damper Type C

Cylindrical buffer made of black natural rubber (NR) with twin-sided galvanized inside thread. Characterized by elasticity, resistance, cold-resistance and excellent physical properties. Not suitable for petrol, grease, oil and ozone.

Art. code	Ø mm	Housing height mm	Thread	Thread length mm	Price p/mtr.
12596015	20	20	M6	6	€ 1,98
12596075	30	30	M8	8	€ 2,61
12596090	40	40	M8	8	€ 3,85
12596100	50	40	M10	10	€ 5,48
12596110	50	50	M10	10	€ 6,44
12596125	75	50	M12	12	€ 12,30
12596130	100	55	M16	16	€ 21,05
12596135	100	75	M16	16	€ 25,95



Vibration damper Type D

Cylindrical buffer made of black natural rubber (NR) with one-sided galvanized outside thread. Characterized by elasticity, resistance, cold-resistance and excellent physical properties. Not suitable for petrol, grease, oil and ozone.

Art. code	Ø mm	Housing height mm	Thread	Thread length mm	Price p/mtr.
12596260	30	20	M8	20	€ 2,17
12596290	40	28	M8	23	€ 2,86
12596295	50	28	M10	28	€ 3,42
12596325	75	51	M12	37	€ 9,92



Plastics & Rubbers

1
2
3
4
5
6
7
8
9
10
11
13
14
15

Rubber tube clamps

Preformed clamp galvanized steel strip with rubber profile. Especially for vibration-free hanging hoses (brake) pipes and cables. Rubber profile is weather, wind and oil resistant



Art. code	Clamping range	Price
25690106	6.40-7.90	€ 0,88
25690108	7.90-9.50	€ 0,88
25690110	9.50-11.10	€ 0,88
25690112	12.70-14.30	€ 1,02
25690115	14.30-15.90	€ 1,02
25690116	15.90-17.50	€ 1,19
25690118	17.50-19.00	€ 1,19
25690120	19.00-20.60	€ 1,19
25690122	22.20-23.80	€ 1,30
25690125	25.40-27.00	€ 1,58
25690128	27.00-28.60	€ 1,61
25690132	31.80-33.30	€ 2,17
25690135	34.90-36.50	€ 2,38
25690138	38.10-41.00	€ 2,63
25690145	44.50-47.00	€ 2,91
25690150	51.00-54.00	€ 3,22
25690160	60.00-65.00	€ 3,61

Balljoints

Glvs steel balljoints with internal and external thread. Steel on steel with hardened ball, fuse clip and wrench areas for ball bushing and pen.



Plastics & Rubbers

Art. code	Inside Thread / Outside Thread	Price
27160705	M5 right/right	€ 2,59
27160706	M6 right/right	€ 2,77
27160708	M8 right/right	€ 3,91
27160710	M10 right/right	€ 5,11
27160712	M12 right/right	€ 6,93
27160714	M14x1.50 right/right	€ 15,91
27160805	M5 left/right	€ 2,88
27160806	M6 left/right	€ 3,08
27160808	M8 left/right	€ 4,09
27160810	M10 left/right	€ 5,63



MIG welding wire

Welding Wire CRMO-1. Solid copper coated MIG/ MAG welding wire for welding creep and hydrogen resistant steels. Wrapped in plastic core coils. Very good welding, low spatter loss and good weld appearance. Easy to weld with mixed gas.



Art. code	Diameter mm	Packaging weight	Price per roll
12010073	0.80	3 kg.	€ 45,00
12010080	0.80	15 kg.	€ 114,00



Art. code	Material	Diameter mm	Price 1-4 kg.	Price > 5 kg.
11810645	crmo	1.60	€ 12,60	€ 9,76
11810650	crmo	2.00	€ 11,60	€ 8,58
11810620	steel SG2	2.00	€ 9,44	€ 6,75

TIG welding rods

Rods for TIG welding. Easy to weld with CO2 mixed gas. Price per kg.

Steel welding sockets black

Steel welding sockets black nr. 16. BSP inner thread.



Art. code	Size	Height mm	Price
11737010	1/8"	17.00	€ 0,54
11737020	1/4"	25.00	€ 0,54
11737030	3/8"	28.00	€ 0,54
11737040	1/2"	35.00	€ 0,66
11737060	3/4"	39.00	€ 0,69
11737080	1"	43.00	€ 1,47

Aluminium welding sockets

Aluminium welding sockets. Light-weight weldable aluminum sockets. Ideal for fuel, oil, (cooling) water.



Art. code	Size	Height mm	Price
11769100	1/8"	17.00	€ 2,60
11769105	1/4"	25.00	€ 2,80
11769110	3/8"	28.00	€ 3,60
11769115	1/2"	35.00	€ 4,40
11769120	3/4"	39.00	€ 6,00
11769125	1"	43.00	€ 8,00

Welding



Aluminium weld fittings Dash

High-flow aluminium weld fittings Dash. With collar for easy centering before welding. Usually used in motor-sports for oil and gasoline tanks

Art. code	Size	Type	Price
11769005	9/16"	DASH 6	€ 6,44
11769010	3/4"	DASH 8	€ 7,92
11769015	7/8"	DASH 10	€ 9,52
11769020	1.1/16"	DASH 12	€ 11,04

Cable ties colored

Nylon 6.6, UL 94V-2, UL 94V-0. With curved tip for easy mounting. Packaging is one bag of 100 pieces. Resistant to: oil, grease, salt and dilute acid. Size: 4,8 x 200 mm Capacity: max. diam. 50mm

Art. code	Color	Price 1-9	Price 10-24	Price >25
12601205	Blue	€ 7,85	€ 6,28	€ 4,71
12601210	Green	€ 7,85	€ 6,28	€ 4,71
12601215	Grey	€ 7,85	€ 6,28	€ 4,71
12601220	Orange	€ 7,85	€ 6,28	€ 4,71
12601225	Red	€ 7,85	€ 6,28	€ 4,71
12601230	Yellow	€ 7,85	€ 6,28	€ 4,71

Cable ties black

Nylon 6.6, UL 94V-2, UL 94V-0. With curved tip for easy mounting. Packaging is one bag of 100 pieces. Resistant to: oil, grease, salt and dilute acid.

Art. code	Width mm	Length mm	Price 1-9	Price 10-24	Price >25
12601304	2.50	100.00	€ 1,10	€ 0,88	€ 0,66
12601310	3.60	140.00	€ 3,00	€ 2,40	€ 1,80
12601314	3.60	200.00	€ 4,05	€ 3,24	€ 2,43
12601320	4.80	200.00	€ 5,25	€ 4,20	€ 3,15
12601326	4.80	300.00	€ 7,55	€ 6,04	€ 4,53
12601328	4.80	370.00	€ 9,45	€ 7,56	€ 5,67
12601334	7.60	368.00	€ 18,90	€ 15,12	€ 11,34
12601336	7.60	540.00	€ 28,50	€ 22,80	€ 17,10
12601340	9.00	530.00	€ 40,05	€ 32,04	€ 24,03
12601342	9.00	775.00	€ 62,95	€ 50,36	€ 37,77



Assortment cable ties + dispenser

Assortment cable ties + dispenser. Yellow steel rack with a range of 1,000 black cable ties. Dispenser hanging and standing usable. Content:

- 2,5x100 (200 pcs.)
- 3,6x140 (200 pcs.)
- 4,8x200 (200 pcs.)
- 4,8x300 (200 pcs.)
- 4,8x370 (200 pcs.)

Art. code: 12601292

€ 45,00



Side cutter for cable ties

Knipex diagonal cutter with 45 ° angled blades for flush cutting sprues off plastic components or soft materials such as lead. With opening spring. Vanadium electric steel, oil-hardened and tempered. The cutting edge has only the basic hardness of the material. 46 - 50 HRC. Often used to cut off cable ties because it leaves no sharp edges so injuries are history.

Art. code: 12731116

€ 32,50



Duct tape

Duct tape is oil and water resistant and therefore suitable for emergency repairs. This form of adhesive tape is also suitable for non-permanent fastening. Practical to use due to its strength lengthwise, but still easy to tear off widthwise.

Art. code	Color	Width mm	Price 1-24	Price >25
13790010	Grey	50.00	€ 5,94	€ 5,26
13790015	White	50.00	€ 5,94	€ 5,26
13790020	Yellow	50.00	€ 5,94	€ 5,26
13790025	Red	50.00	€ 5,94	€ 5,26
13790030	Blue	50.00	€ 5,94	€ 5,26
13790035	Black	50.00	€ 5,94	€ 5,26
13790040	Green	50.00	€ 5,94	€ 5,26
13790050	Black	100.00	€ 11,45	€ 10,14



Accessories



Deburring Tool Globurr E

With ergonomic handle and storage in the handle for spare blades. Suitable for heavy duty applications for deburring holes, slots and edges of steel, aluminum, copper and plastic. Pen model with handy pocket clip including one replaceable HSS blade E100.

Art. code: 12853430



€ 5,00

Hand deburring set E

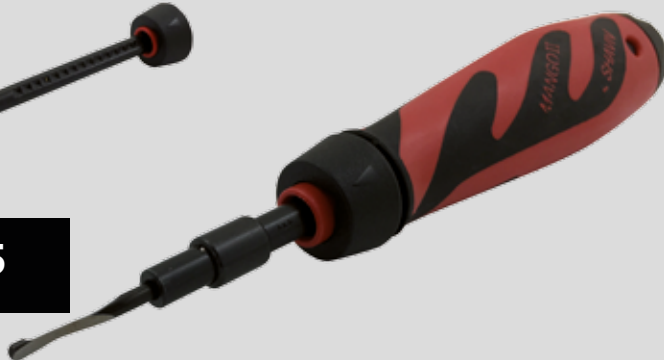
With ergonomic handle, telescopic shaft and storage in handle for spare blades. Specially developed for heavy duty applications. The telescopic adjustable shaft makes it possible to remove deep burrs. Suitable for deburring holes, slots and edges of steel, aluminum, copper and plastic. Includes 3 HSS blades type E100, E200 and E300

Art. code: 12853420



Telescopic shaft

€ 18,25



Spare blades E100

Set of 10 pcs HSS deburring blades. Spare blades fit all Shaviv hand deburring tools type E.

Art. code: 12853100



€ 16,50

Safety wire twister pliers

For thread locking. With additional cutting function and 40° slanted grip jaws to hold the locking wire securely. For wires up to Ø 1,6 mm. With automatic return. Made from chrome vanadium.

Art. code	Total length mm	Price
12729520	215	€ 29,95
12729530	270	€ 32,50



Stainless steel safety lockwire

302 grade locking wire taken from the aircraft industry and designed to military standards.

The best quality stainless steel locking wire available. To be used in combination with the safety wire twister pliers to prevent the loosening of screw connections



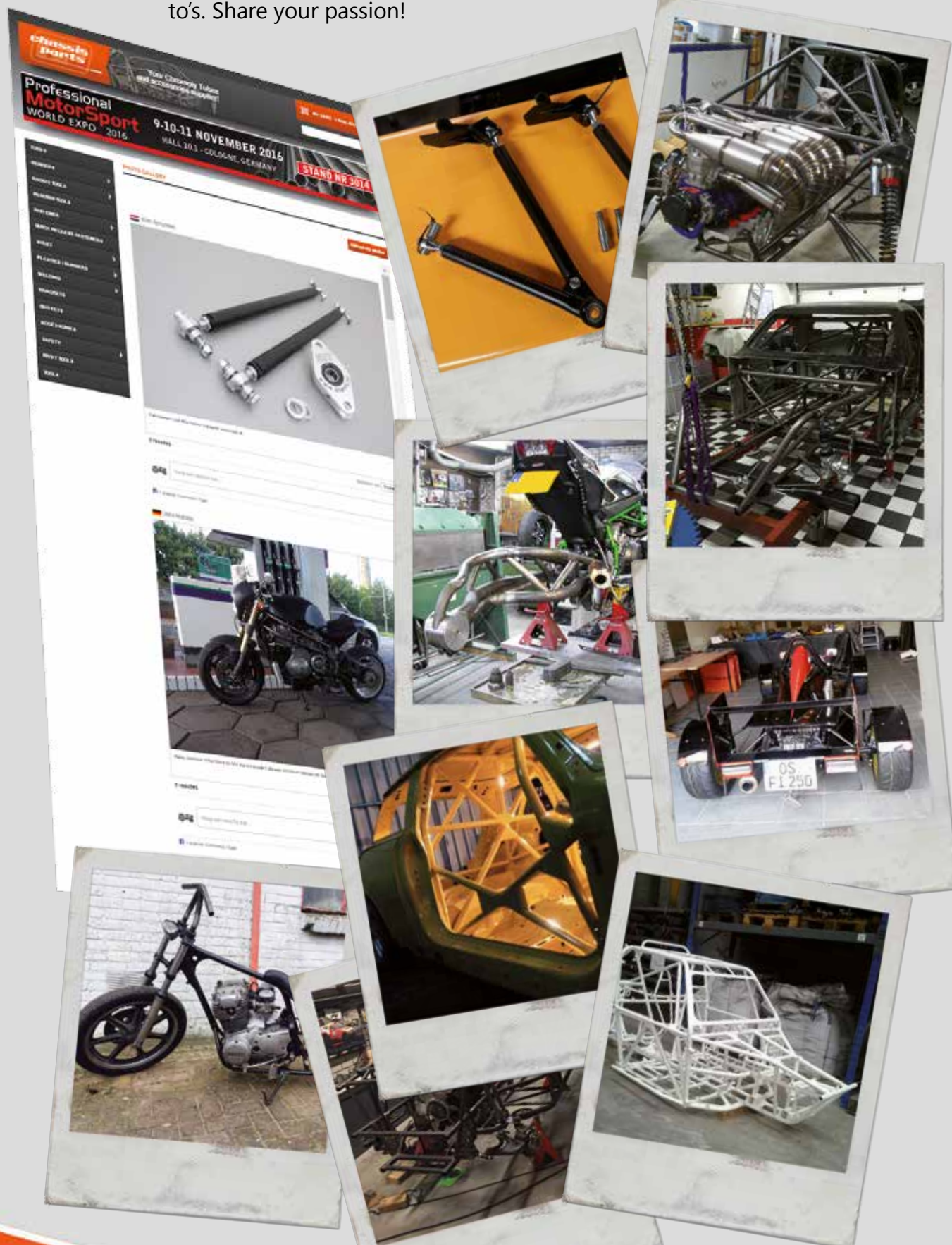
Art. code	Wire thickness mm	Length	Price
10460016	0.62	200 mtr.	€ 23,26
10460018	0.81	120 mtr.	€ 20,51



Show us your work!

When you have spend hours and hours on building your perfect race car, you might want to share your project with other enthusiasts.

When you navigate to chassisparts.com/photos/ you can upload your photo's, have a look at projects from other chassis builders and comment on the photo's. Share your passion!





VISIT US AT

WWW.CHASSISPARTS.COM